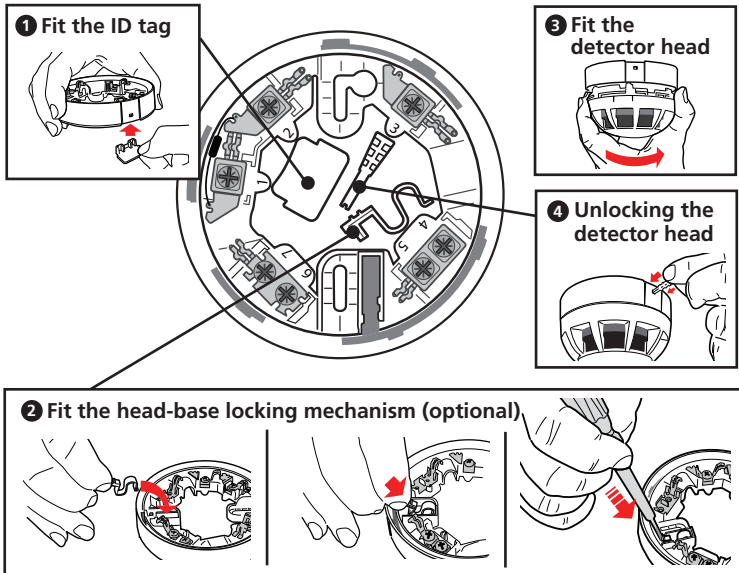


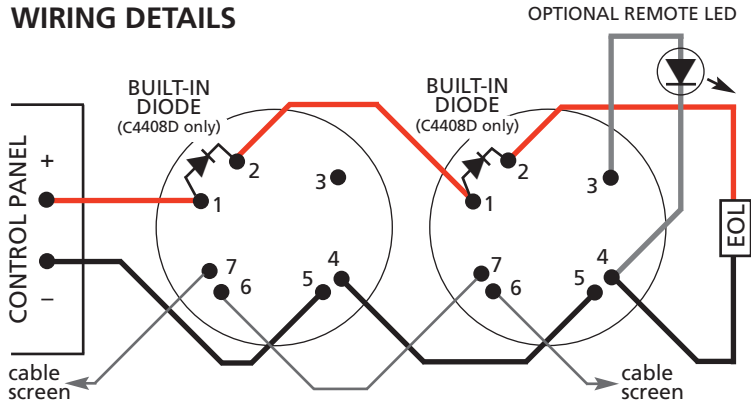
C4408 DETECTOR BASE

C4408D DETECTOR BASE WITH DIODE

Remove the optional identification and security tags from the centre of the base and use as shown in steps 1, 2 & 4. See overleaf for wiring details.



WIRING DETAILS



- Correct polarity must be observed.
- Do not mount bases on uneven surfaces.
- Terminals can accept 0.4-2.5mm² wiring.
- For optimum performance we recommend screened cables are used.
- See our ActiV Wiring Guide for more details.

BASE CONNECTION DETAILS

Contact No.	Function
1	+Ve IN (diode connection on C4408D only)
2	+Ve OUT (diode connection on C4408D only)
3	Remote LED +Ve
4	0V
5	0V
6	Screen
7	Screen

